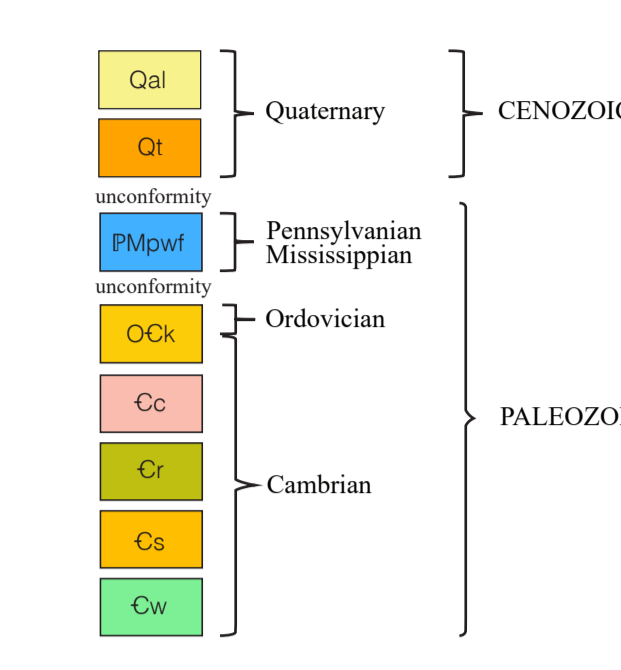


CORRELATION OF MAP UNITS



DESCRIPTION OF MAP UNITS

- Qal (Alluvium (Quaternary))**—Unconsolidated deposits of sand, silt, clay, gravel, and cobbles. Mapped primarily along larger streams and not shown on the cross sections.
- Qr (Terrace deposits (Quaternary))**—Unconsolidated, medium to coarse gravel (mostly rounded pebbles) in a sand or sandy clay matrix. Deposits are too thin to be shown on cross sections.
- Pmpw (Parkwood Formation and Floyd Shale undifferentiated (Middle and Upper Mississippian))**—**Parkwood Formation:** Ballplay window; grayish-brown shale that is commonly deformed and slightly phyllitic in places, commonly interbedded with brown fine- to medium-grained thin-bedded sandstone and siltstone. **Floyd Shale:** Ballplay window; black, pervasively deformed shale.
- Ock (Knox Group undifferentiated (Upper Cambrian and Lower Ordovician))**—Dominantly light-colored residual chert in an orange-brown to dark-reddish-brown clay soil; residual chert commonly preserves the texture of the original carbonate rocks. The residual chert is brecciated in some locations.
- Cc (Conasauga Formation (Middle and Upper Cambrian))**—Rome thrust sheet: olive-green/tan, light brown, and medium- to dark-gray fissile shale, silty shale, and siltstone, which is interbedded with local lenticular to thin beds of medium- to dark brown, fine- to medium-grained sandstone, and light to medium gray carbonate mudstone/siltstone or medium-gray dolomitic/dark-gray stylonodular limestone. Western Coosa thrust sheet: light bluish gray to pale-gray dolomitic micrite, dolomitic ooid grainstone, which commonly weathers to a greenish blue; oolitic dolomite includes some gray cavernous chert near the top of formation.
- Cr (Rome Formation (Lower Cambrian))**—Purplish or rusty red, yellowish limonitic, or pale gray mudstone and shale, which is interbedded with yellowish tan, rusty red, or gray, locally laminated, siltstone/fine-grained sandstone.
- Cs (Shady Dolomite (Lower Cambrian))**—Pale to medium bluish-gray, irregularly bedded dolomitic mudstone that contains bluish-gray chert nodules, which grades up into purple mudstone containing bluish-gray and vitreous black chert nodules. Most outcrops characterized by porous rusty red/orchre chert with limonitic crust, bluish-gray or white/gray mottled chert.
- Cw (Weisner Formation (Lower Cambrian))**—White, pale gray, or tan, medium- to very coarse-grained quartzitic sandstone, quartzite, and conglomerate.

SYMBOLS FOR GEOLOGIC MAP

- Contact, located very approximately, showing location of control point (contact exposed or closely located)
- Thrust fault, located very approximately, sawtooth on upper plate
- Strike and dip of bedding
- Strike and dip of vertical bedding
- Lithologic control point (lithologic unit identified, bedding orientation unavailable)

SYMBOLS FOR CROSS-SECTIONS

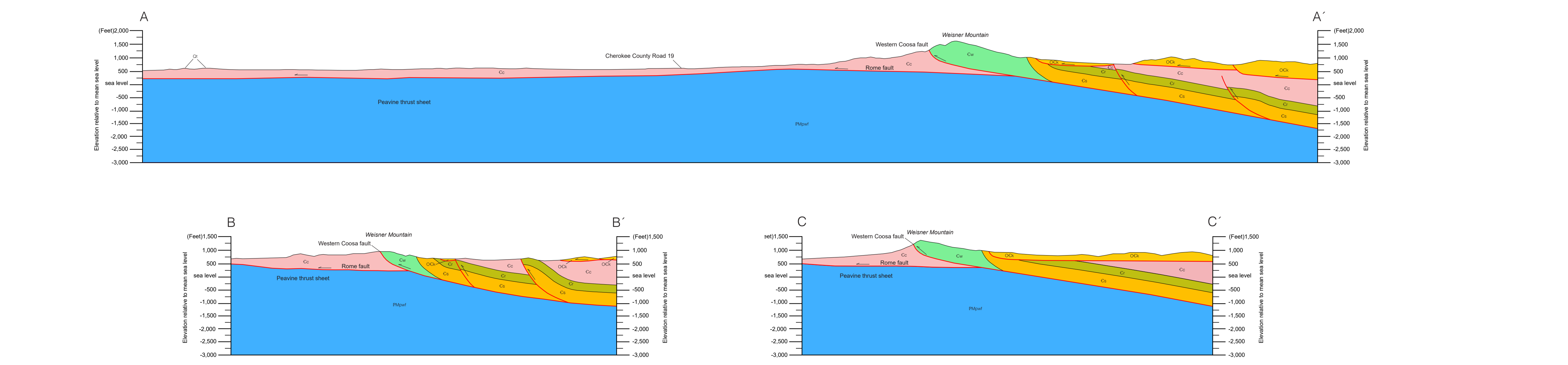
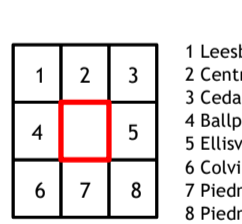
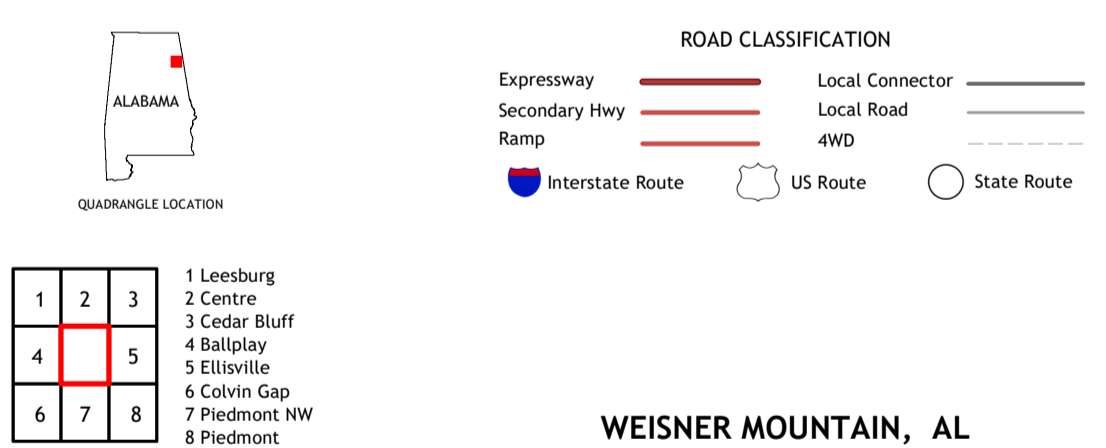
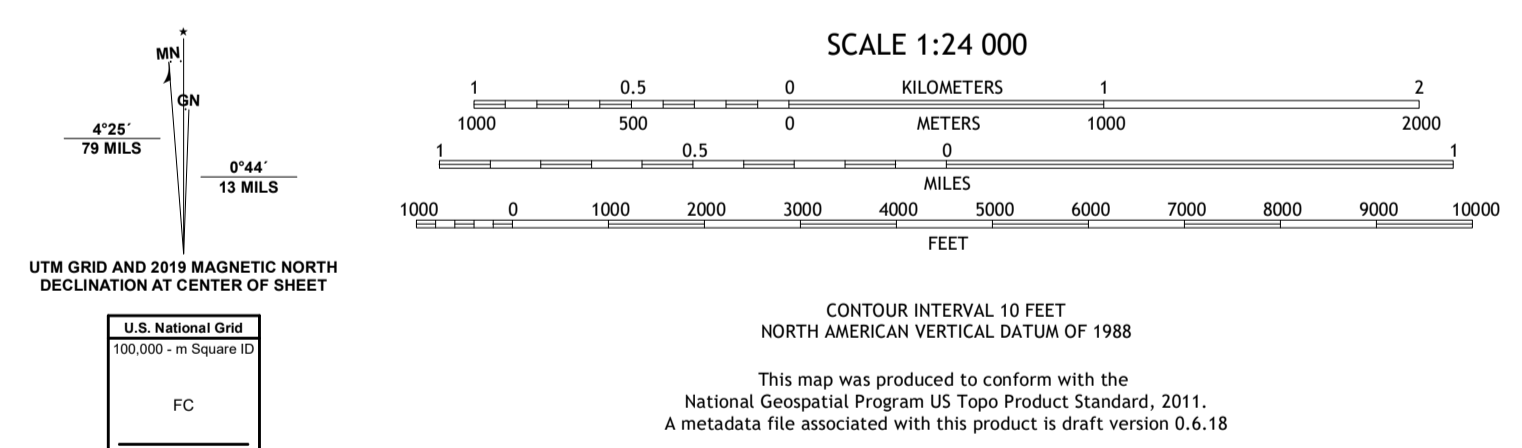
- Stratigraphic contact
- Fault showing relative movement

For additional geologic information (including detailed rock descriptions and outcrop photos, etc.), please refer to the accompanying quadrangle series report:  
 Cook, B. S., 2023, Geology of the Weisner Mountain 7.5-minute quadrangle, Cherokee and Etowah Counties, Alabama: Alabama Geological Survey Quadrangle Series 74, 31 p.  
 A copy of this map and report is available from the GSA Publications office (<https://www.gsa.state.al.us/ogb/publications/>).

This map was compiled for a scale of 1:24,000 and any digital enlargement of the map to scales greater than 1:24,000 will not increase accuracy and can cause misrepresentation. Map and associated digital data files may be updated in future years. Map files are version dated, and users are responsible for obtaining the latest version of the map and associated data. Geologic map information was collected and recorded in the field by the Geological Survey of Alabama mapping staff and this map reflects an interpretation of the geology based on that data collected at the time of field mapping.

This topographic base map is available on the USGS webpage "topoView" (<https://ngmdb.usgs.gov/topoview/>).

Produced by the United States Geological Survey  
 North American Datum of 1983 (NAD83)  
 World Geodetic System of 1984 (WGS84) Projection and  
 1,000-meter grid (Universal Transverse Mercator, Zone 16S)  
 This map is not a legal document. Boundaries may be  
 generalized for this map scale. Private lands within government  
 reservation may not be shown. Obtain permission before  
 entering private lands.



GEOLOGIC MAP AND CROSS SECTIONS OF THE WEISNER MOUNTAIN 7.5-MINUTE QUADRANGLE, CHEROKEE AND ETOWAH COUNTIES, ALABAMA

by  
 Brian S. Cook, William A. Thomas, William T. Jackson, Jr., W. Edward Osborne, G. Daniel Irvin, James A. Drahovzal, and Sandy M. Ebersole  
 2023



Berry H. (Nick) Tew, Jr.  
 State Geologist