

EXPLANATION FOR GEOLOGIC MAP AND CROSS SECTION

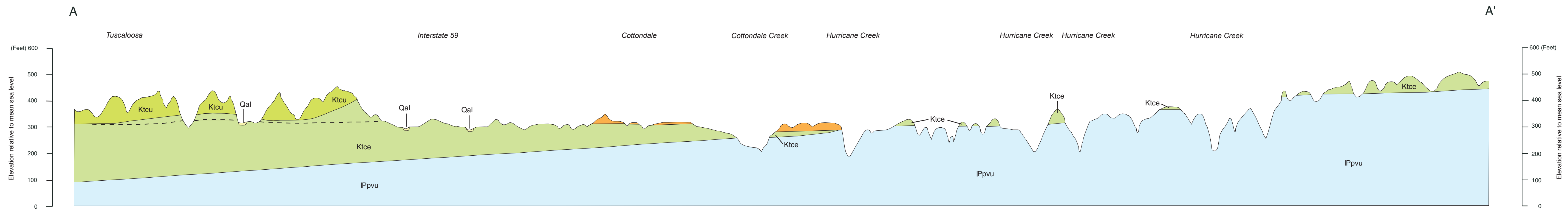
QUATERNARY	<b>Qal</b>	<b>Alluvium.</b> Unconsolidated sand, silt, clay, and gravel deposited in the flood plains of streams. Thicker deposits occur in the Coastal Plain and are derived primarily from the Coker Formation and terrace deposits.
	<b>Qt</b>	<b>Terrace deposits.</b> Sand and gravel, dark-reddish-brown, crossbedded, with mottled red and white clay lenses. Gravel is fine to coarse and includes tripolitic chert, tan chert, rough-surfaced quartz, and ironstone. Rooted zones are locally common at the surface.
CRETACEOUS	<b>Ktcu</b>	<b>Coker Formation, upper unnamed member.</b> Sand, micaceous, crossbedded, flaser-bedded, very fine to medium-grained, locally silty and clayey, contains lenses of chert-rich gravel and sand, weathers to deep red color. Locally contains beds or lenses of gray clay.
	<b>Ktce</b>	<b>Coker Formation, Eoline Member.</b> Lower sand facies: Sand, very fine to coarse-grained, trough crossbedded, micaceous, quartzose, light-yellowish-orange to white, locally weathering to purple or light-red, containing gray clay balls as much as 6 inches in diameter, lenses of clay breccia, and thin lenses of gravel. At base is a bed of polished, varicolored, predominantly disc-shaped pebbles that are mostly quartz. Upper clay facies: Clay, illitic, laminated, gray to purple, weathers to very light gray to light purple; interbedded with laminae to thin beds of very fine to fine-grained, rippled glauconitic sand. Unit thickness is variable because channels in the overlying upper Coker member cut down into the unit.
PENNSYLVANIAN	<b>IPpvu</b>	<b>Pottsville Formation, upper part.</b> Sandstone, conglomerate, and siltstone, dark-gray; shale, black to dark-gray; interbedded with numerous coal seams.

SYMBOLS FOR GEOLOGIC MAP

- x--- Contact, located very approximately, showing location of control point (contact exposed or closely located)
- ..... Contact concealed beneath mapped units
- Test hole drilled for coal exploration that reaches top of Pottsville Formation

SYMBOLS FOR CROSS SECTION A-A'

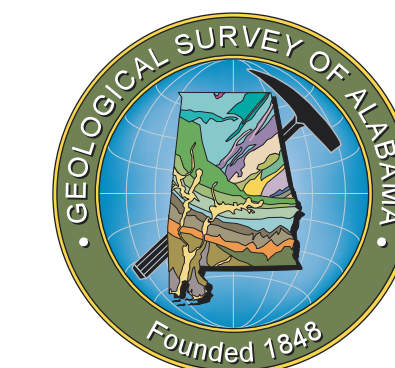
- Stratigraphic contact
- - - - Contact between lower sand facies and upper clay facies of the Eoline Member of the Coker Formation



Scale 1:24,000  
Vertical exaggeration: 10X

CROSS SECTION A-A' AND EXPLANATION FOR THE GEOLOGIC MAP OF THE COTTONDALE 7.5-MINUTE QUADRANGLE AND CROSS SECTION, TUSCALOOSA COUNTY, ALABAMA

By  
Dorothy E. Raymond  
2007



Berry H. (Nick) Tew, Jr.  
State Geologist